



WinKontrol

version **WK3**

user manual



What's new?

WinKontrol WK3 is the latest version of WinKontrol applications family. It is fine-tuned WinKontrol 2004 with new functions. WinKontrol WK3 has:

- fine-tuned user interface
- keypad support
- event support
- day-light time support
- newest TOMST[®] hardware support

In this manual add-on, we will describe all the new features of WinKontrol WK3. For the classic function please refer to WinKontrol 2004 manual.

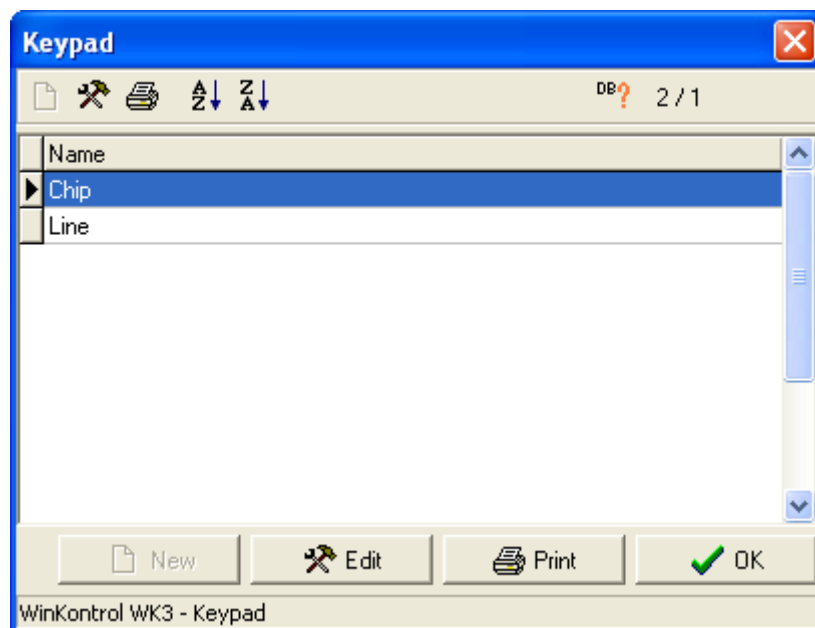
Keypad

Now you can use keypads with WinKontrol. The keypad contains iButtons with numbers 0..9 and an iButton for Clear and Enter. You can insert into P.E.S. sensor special events, where every event has it's own special code (see events).

A keypad events can look like:	
2	Door open
3	Window open
11	Trash in corridor
12	Unauthorized person in room
13	Missing car
234	Broken window
235	Fire in paper basket

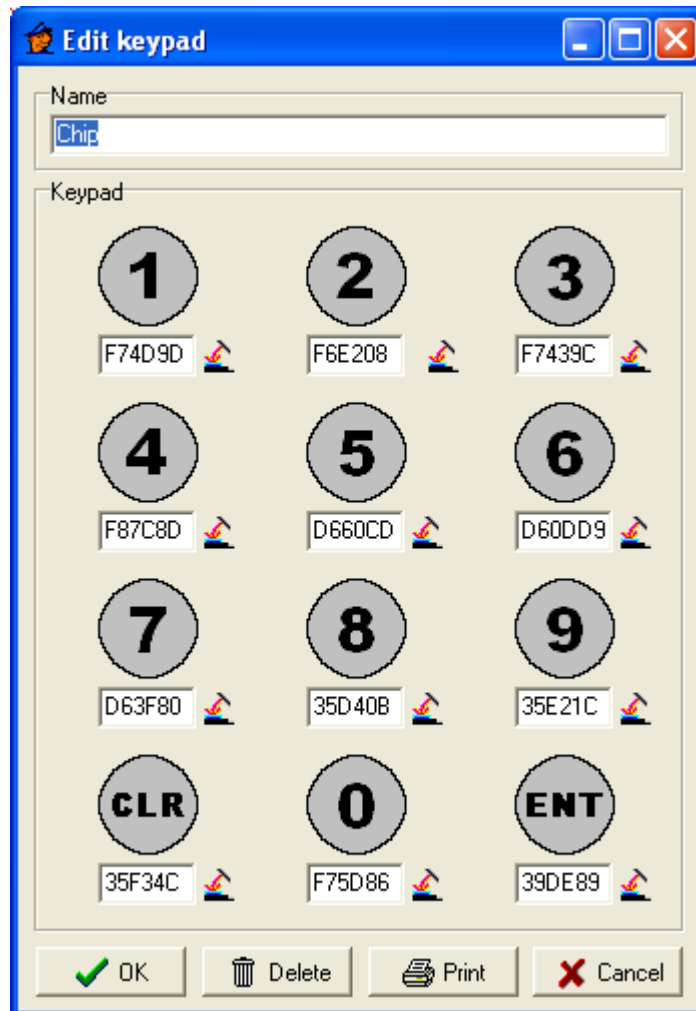
The Clear button deletes the recent code. This is useful in case of guard's error. The enter button accepts code (it can not be deleted any more). Code is accepted also with another iButton (guard, check point and even unknown check) or with attach of transfer iButton. The keypad can contain standard ID iButtons (DS1990A) or you can use special set of iButtons with numbers (DS9105).

Keypad window



This is the main window which contains keypad list. You can create new keypad or edit existing one. You can also print keypad list. In professional version of Winkontrol is also possible to sort keypad. The DB button at top right part of window with text is database status information.

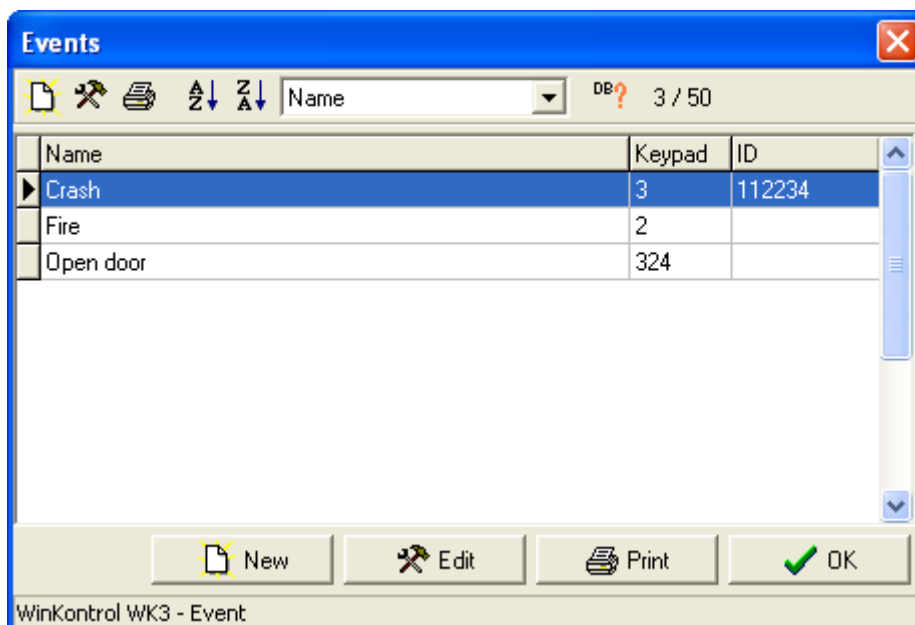
Edit keypad window



Every keypad has twelve unique iButtons and a unique name. You can also print keypad information. If you edit an existing keypad there is also delete button.

Event

An event is a keypad code or an iButton. Each event has a label with unique name. An event has to have assigned a keypad code or an iButton. You can even assign both of them, an event than will occur when a keypad code was read or an iButton was touched.



In this main form you have all the common buttons. You see list of events with keypad code (if is attached) and iButton ID (if is attached).

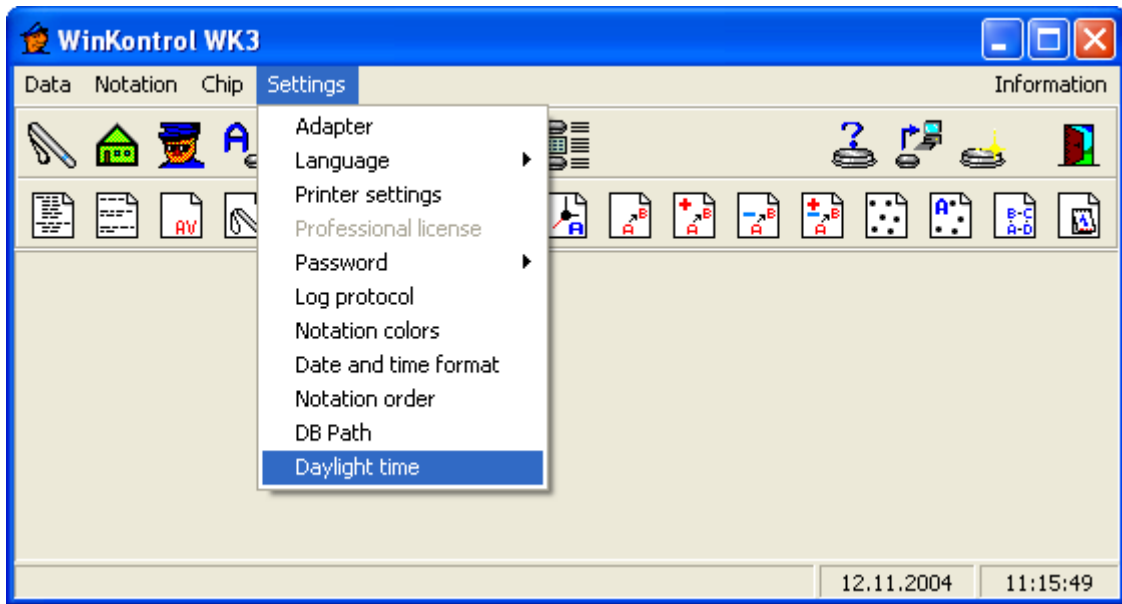
Edit event window



In edit event window you have to enter name and one of keypad code and chip code (you can use both). Both keypad code and chip ID have to be unique, chip ID thru all the databases of WinKontrol.

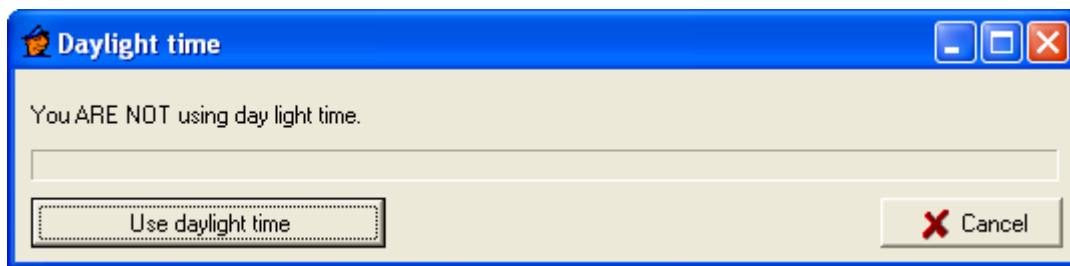
Day-light time

WinKontrol WK3 has possibility to change automatically daylight time. You have no need to care about it anymore. A current setting is for last Saturday of March and for last Saturday of October.



You can find the daylight time option in settings menu.

Daylight time window



In the daylight time windows is just one button to enable or disable daylight time. There is a message in top of this window weather you are using daylight time or not.

Other functions

Please refer to WinKontrol 2004 manual for other functions.

Contents

- What's new? 2
- Keypad 2
 - Keypad window..... 2
 - Edit keypad window 3
- Event..... 3
 - Edit event window..... 4
- Day-light time 4
 - Daylight time window 5
- Other functions..... 5
- Contents..... 6